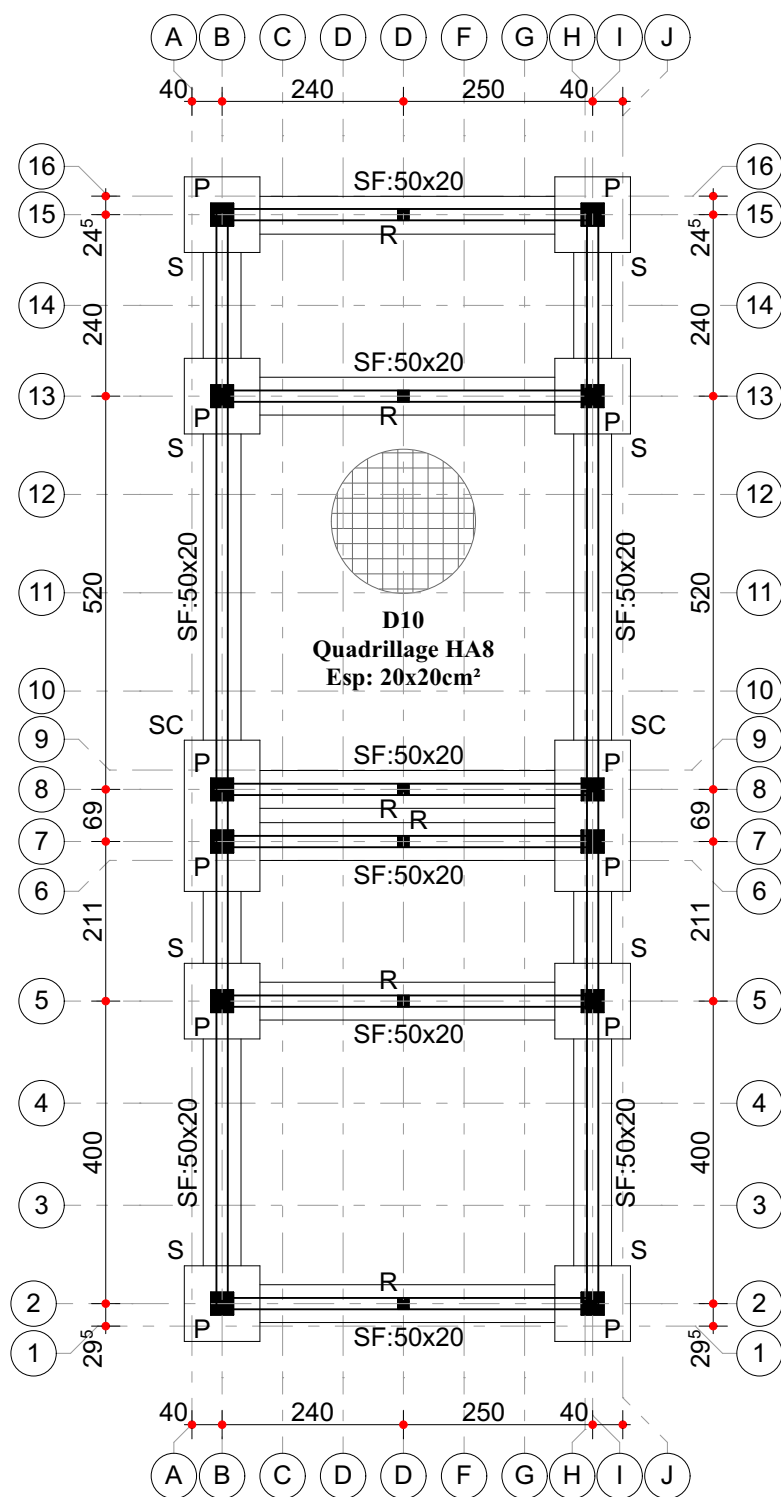
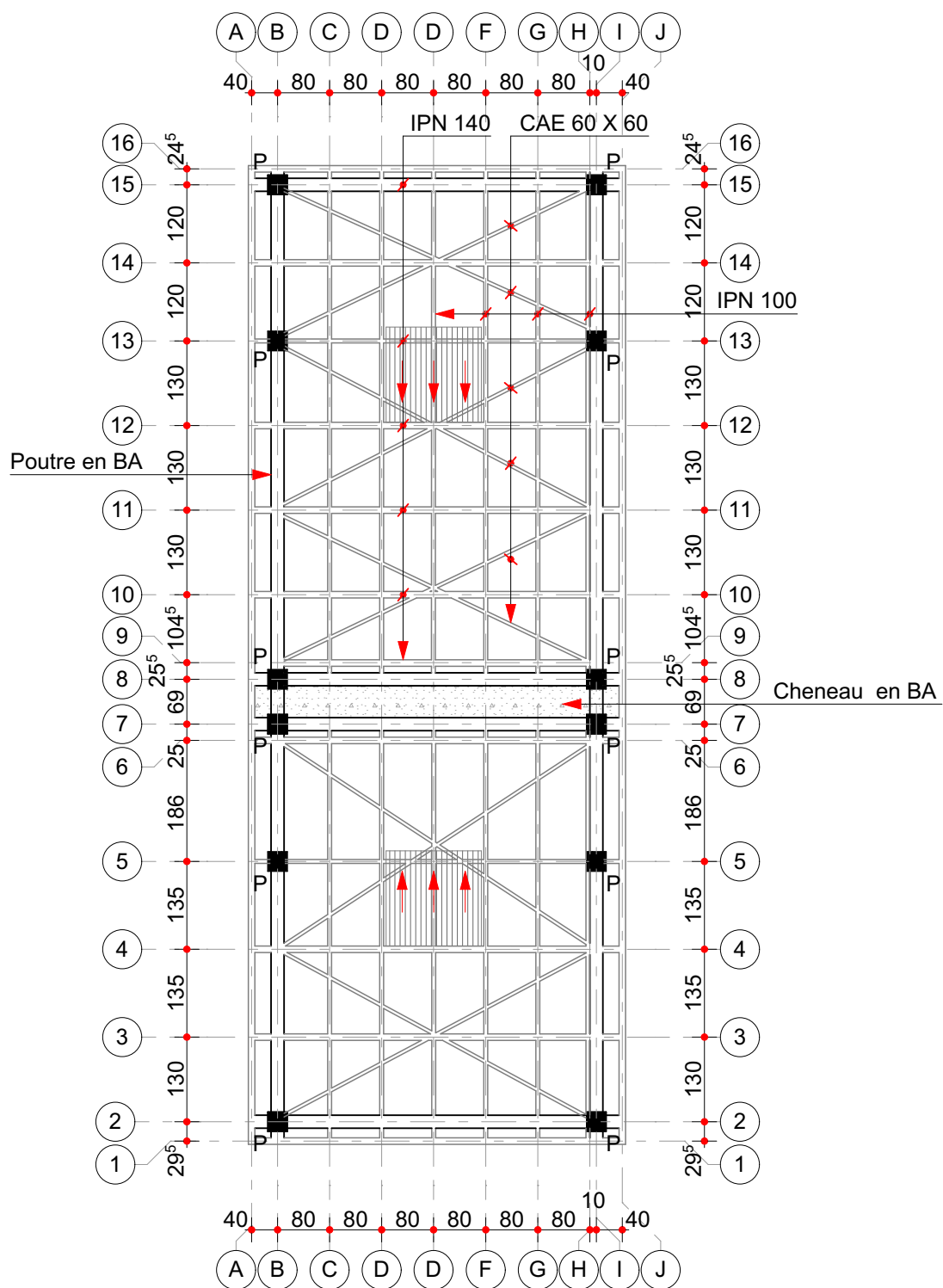


PLANS TECHNIQUES D'EXECUTION



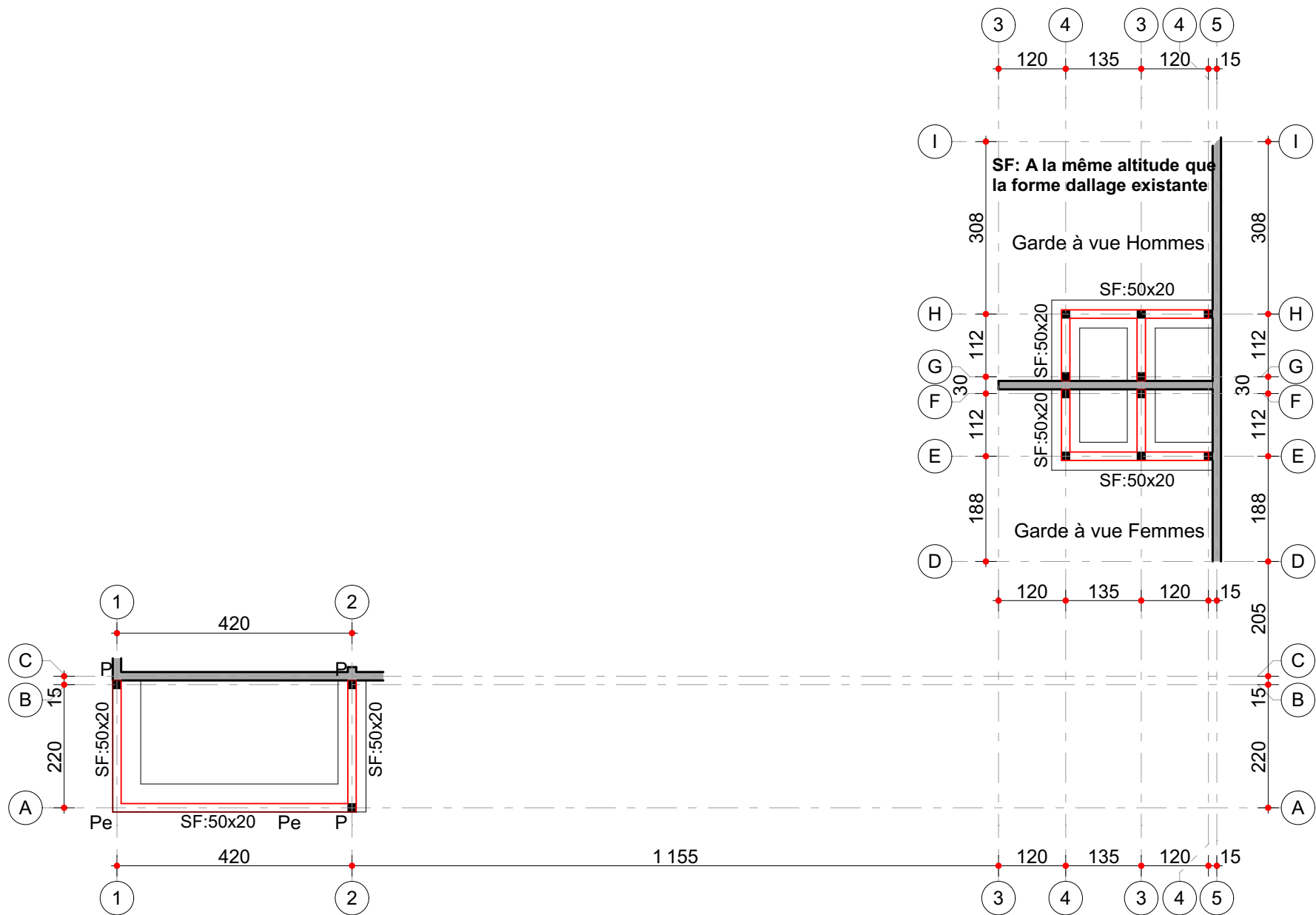
PLAN D'IMPLANTATION ET DE FONDATION

Echelle: 1/100



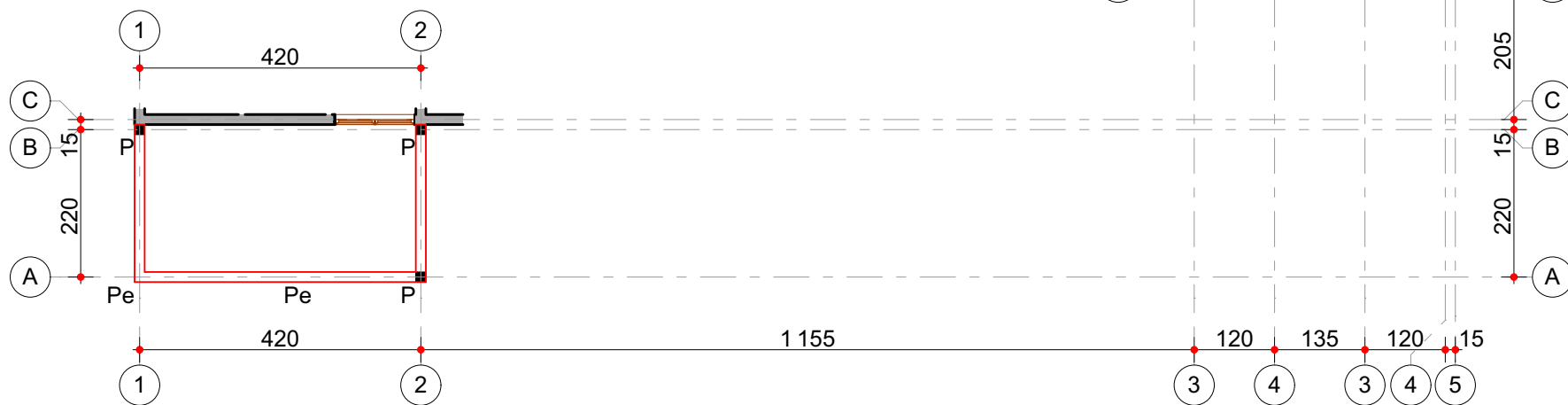
PLAN DE CHARPENTE

Echelle: 1/100



PLAN D'IMPLANTATION ET DE FONDATION COMPLEMENT DE MURS

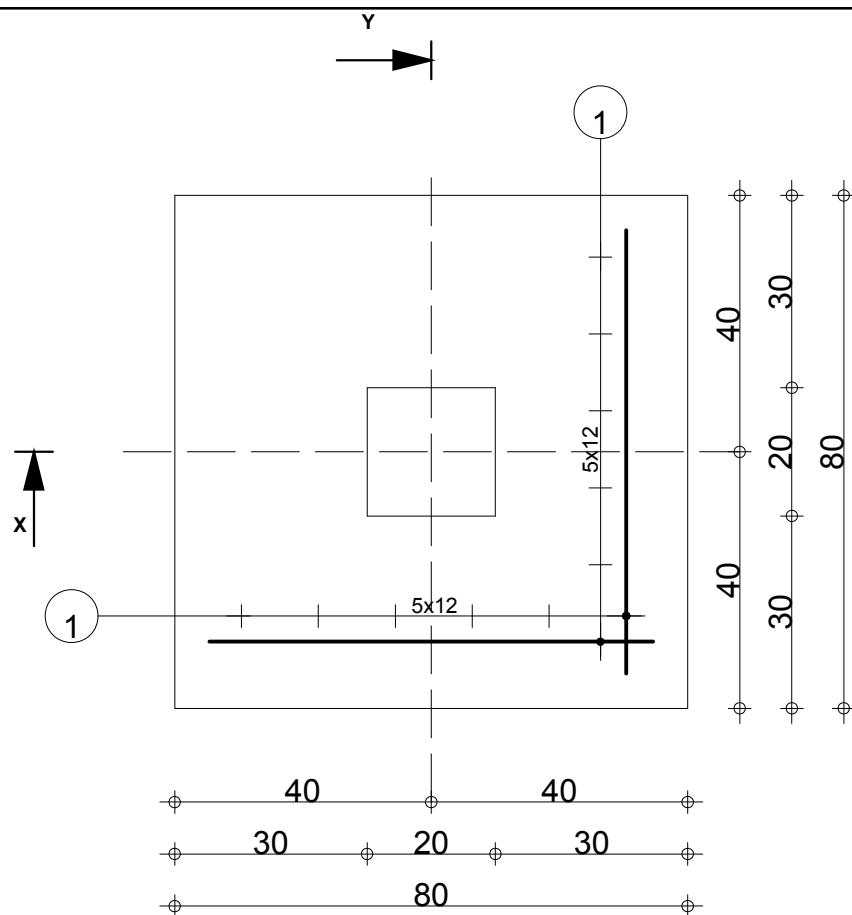
Echelle:1/100



PLAN DES CHAINAGES COMPLEMENT DE MURS

Echelle:1/100

DETAILS TECHNIQUES

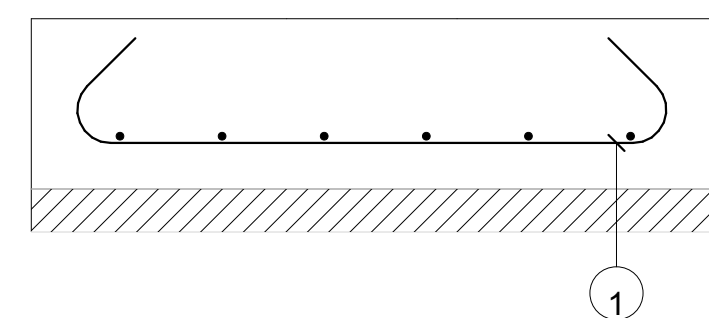


-90

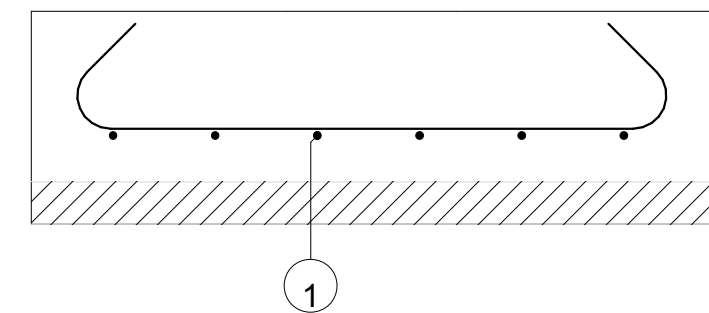
-1.15

-90

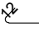
-1.15



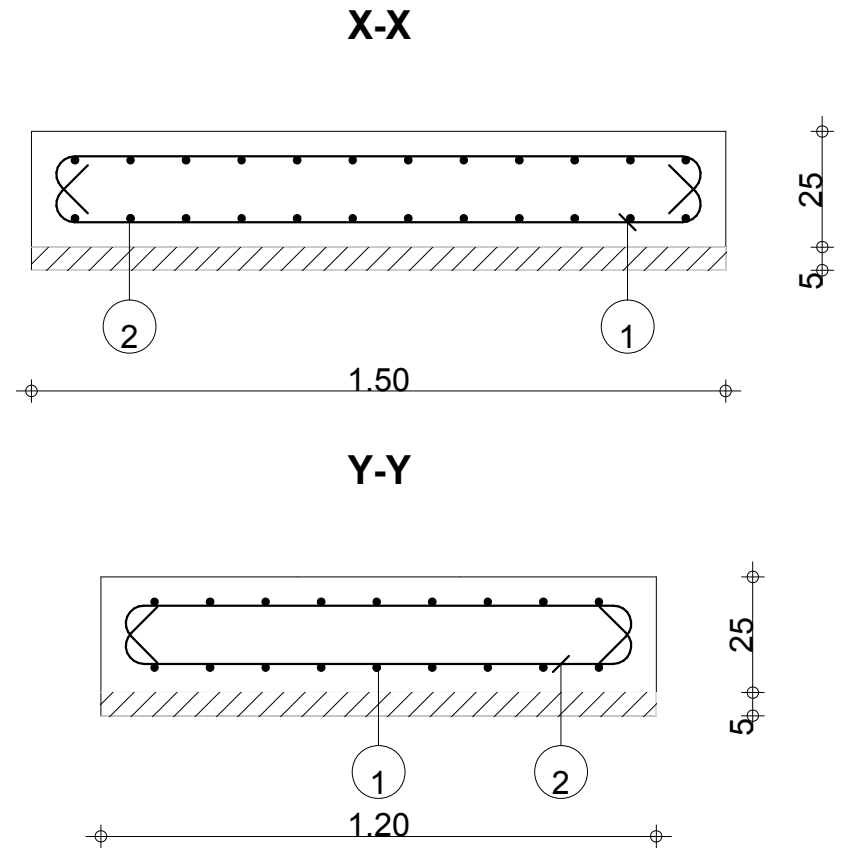
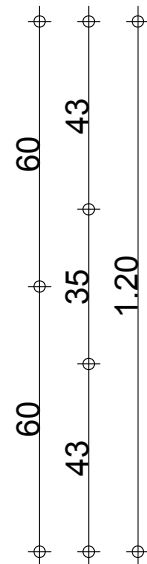
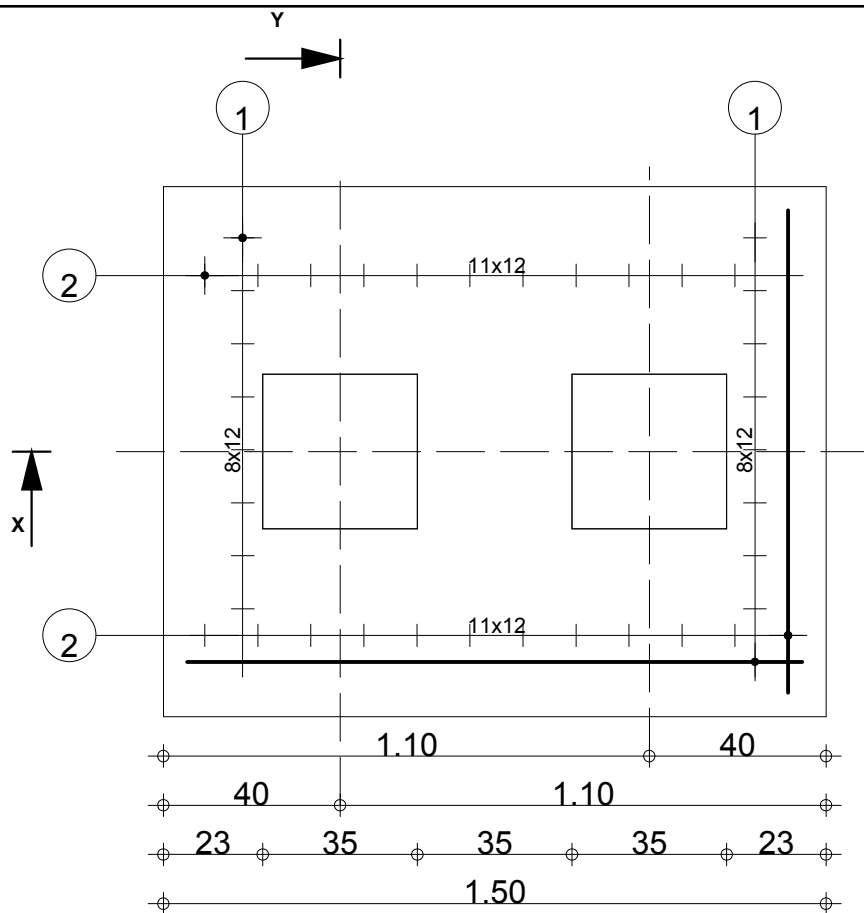
80



80

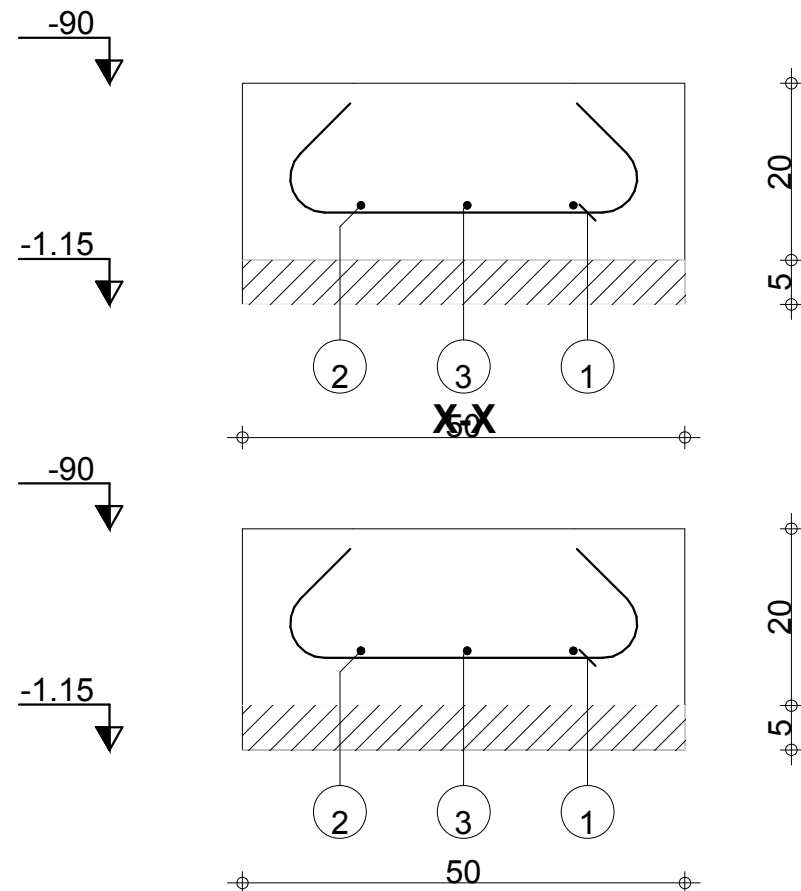
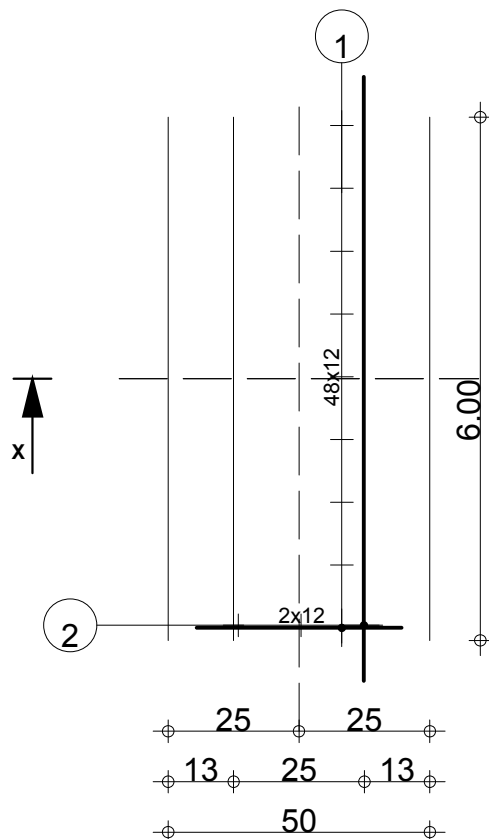
Pos.	Armature	Code	Forme
1	12HA 8	l=96	00  70

		Tél.	Fax		Acier HA 400 = 4.54 kg	
Fissuration peu préjudiciable						
Niveau fondation	S	Nombre 1	Surface du coffrage = 0.64 m2	Enrobage c1 = 5 cm, c2 = 5 cm		
			Densité = 35.47 kg/ m3			
Unité de Police de Bétérou				Echelle pour la vue 8.49cm/m	Page 1/1	



Pos.	Armature	Code	Forme
①	18HA 8 l=1.66	00	↗ 1.40 ↘
②	24HA 8 l=1.36	00	↗ 1.10 ↘

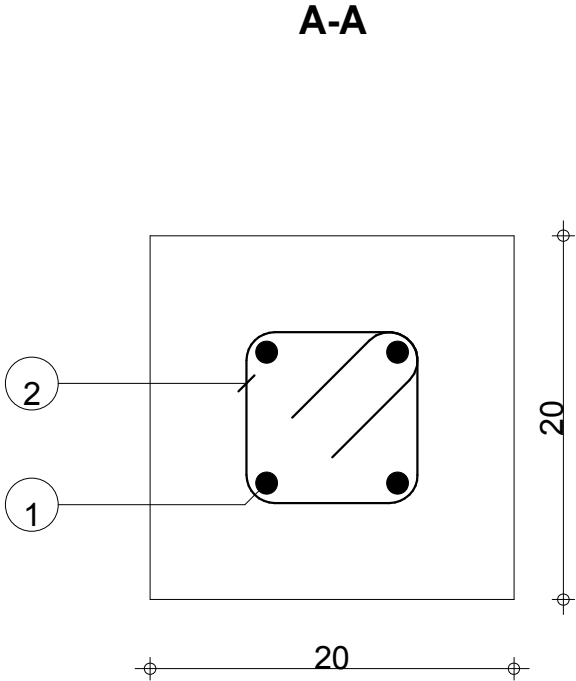
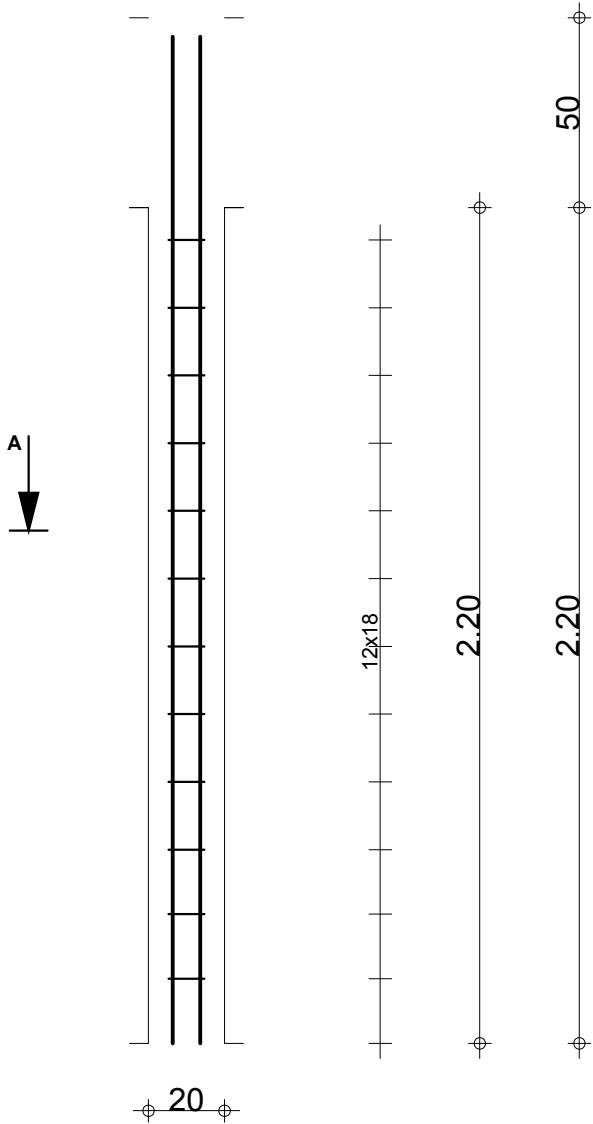
		Tél.	Fax		Acier HA 400 = 24.6 kg	
Fissuration peu préjudiciable						
Niveau fondation	SC	Nombre 1	Surface du coffrage = 1.35 m2		Enrobage c1 = 5 cm, c2 = 5 cm	
			Densité = 54.67 kg/ m3			
Unité de Police de Bétérou					Echelle pour la vue 5.85cm/m	Page 1/1



Pos.	Armature	Code	Forme
①	49HA 8 l=66	00	
②	2HA 8 l=6.16	00	
③	1HA 8 l=4.46	00	

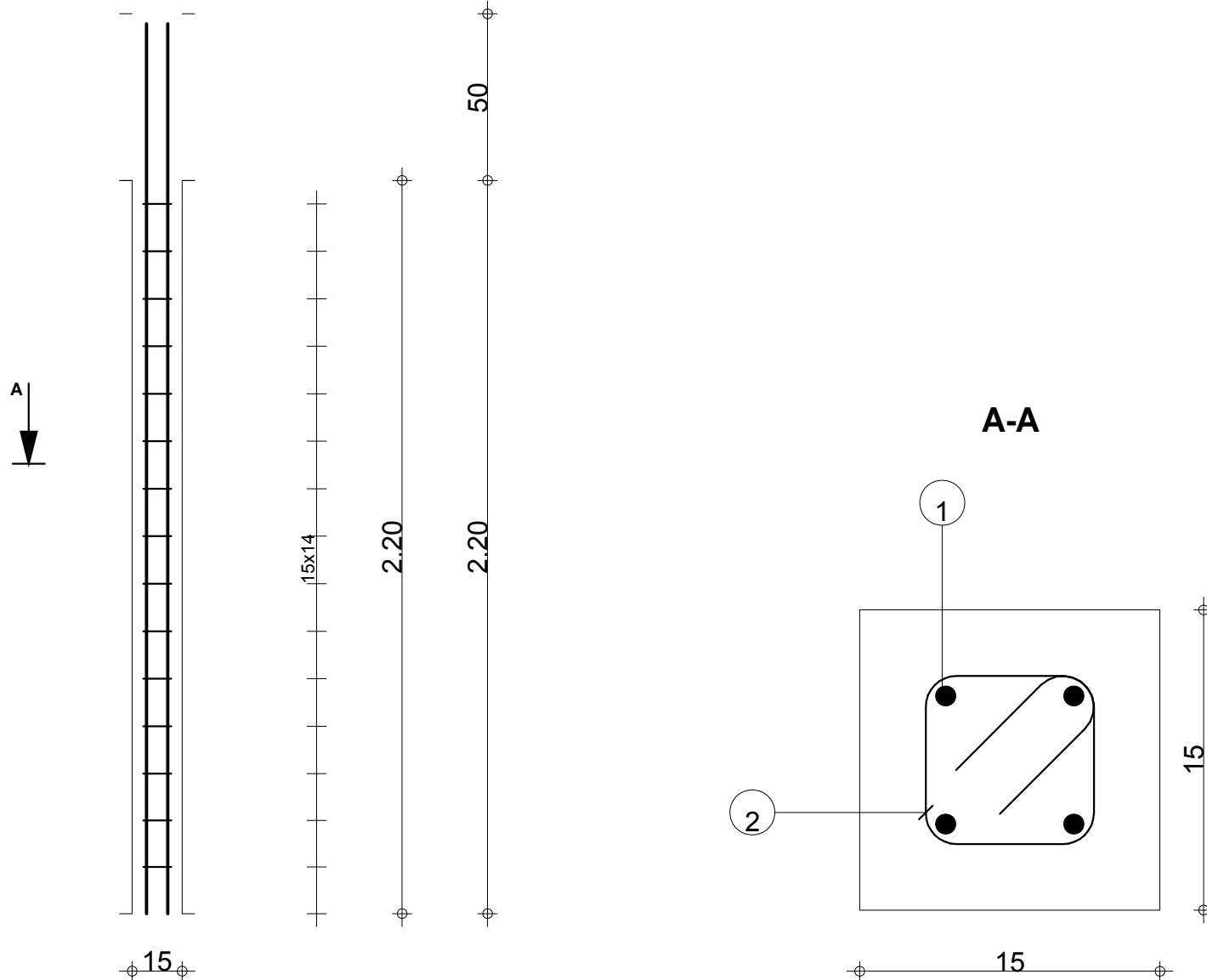
		Tél.		Fax				Acier HA 400 = 19.3 kg			
Fissuration peu préjudiciable											
Niveau fondation Unité de Police de Bétérrou			SF			Nombre 1		Surface du coffrage = 2.6 m2		Enrobage c1 = 5 cm, c2 = 5 cm	
								Densité = 32.17 kg/ m3			
								Echelle pour la vue 6.93cm/m		Page 1/1	

Pos.	Armature	Code	Forme
①	4HA 12 l=2.65	00	2.65
②	12HA 6 l=52	31	<div> <div>10</div> <div>8</div> </div>



<div>Tél. Fax</div>		<div>Acier HA 400 = 9.41 kg</div> <div>Acier HA 400 = 1.38 kg Surface du coffrage = 1.76 m2</div> <div>Enrobage 5 cm</div>	
<div>RDC</div> <div>Unité de Police de Bétérou</div>	<div>P</div> <div>Section 20x20</div>	<div>Echelle pour la vue 5.03cm/m</div> <div>Echelle pour la section 24.1cm/m</div>	
		<div>Page 1/1</div>	

Pos.	Armature	Code	Forme
①	4HA 10 l=2.67	00	—2.67—
②	15HA 6 l=48	31	



Tél.

Fax

RDC

Unité de Police de Bétérrou

R

Section 15x15

Acier HA 400 = 6.58 kg

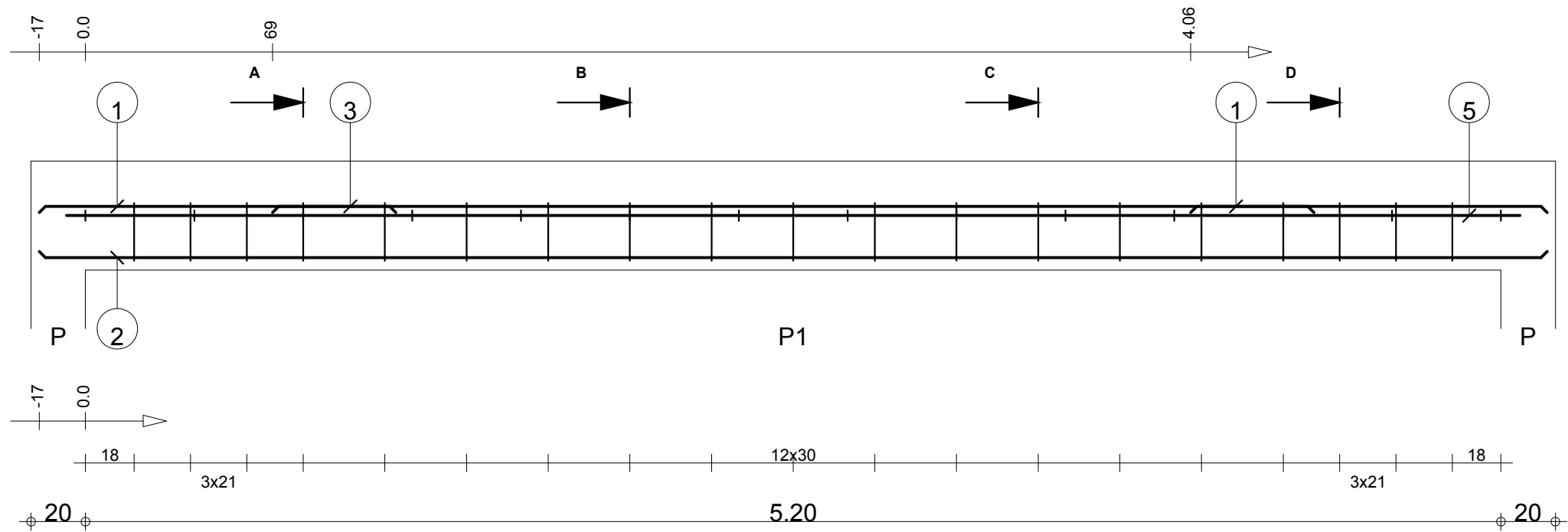
Acier HA 400 = 1.59 kg Surface du coffrage = 1.32 m2

Enrobage 3 cm

Echelle pour la vue 5.19cm/m

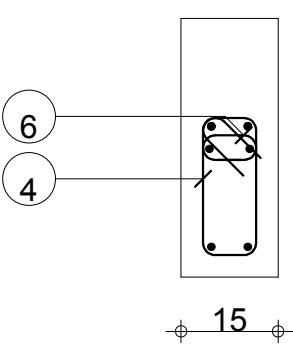
Echelle pour la section 31.2cm/m

Page 1/1

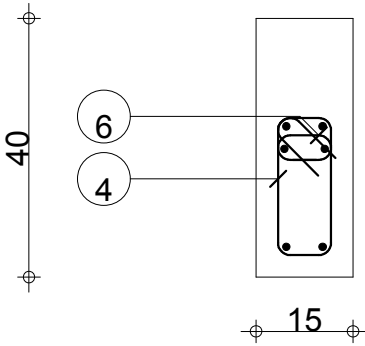


Pos.	Armature		Code	Forme
①	4HA 10	l=1.31	00	1.31
②	2HA 10	l=5.54	00	5.54
③	2HA 10	l=3.83	00	3.83
④	19HA 8	l=78	31	
⑤	2HA 8	l=5.34	00	5.34
⑥	14HA 8	l=24	00	

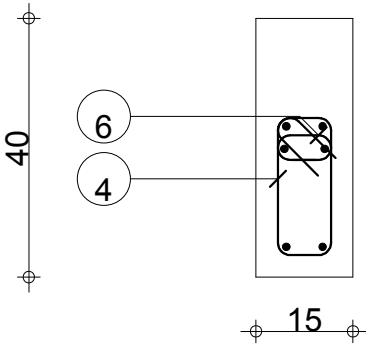
A-A



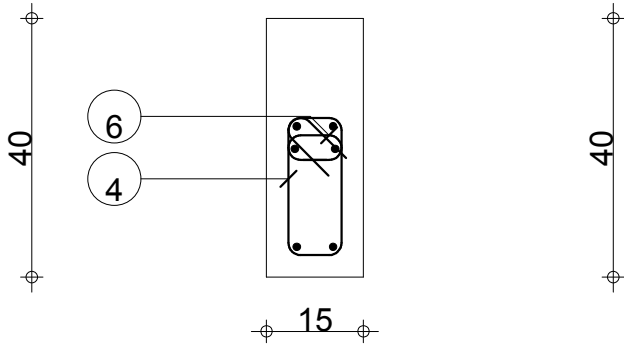
B-B



C-C



D-D



Tél.		Fax		Béton : BETON = 0.336 m3	Acier HA 400 = 14.8 kg	
Tenue au feu 0h		Fissuration peu préjudiciable			Acier HA 400 = 11.4 kg	
CHARPENTE Unité de Police de Bétérou	Poutre en BA : P1 Section 15x40		Nombre 1	Surface du coffrage = 5.38 m2	Enrobage inférieur 3 cm Enrobage latéral 3 cm	
				Densité = 77.68 kg/ m3	Echelle pour la vue 4.71cm/m	Page 1/1
				Diamètre moyen = 8.91mm	Echelle pour la section 8.56cm/m	